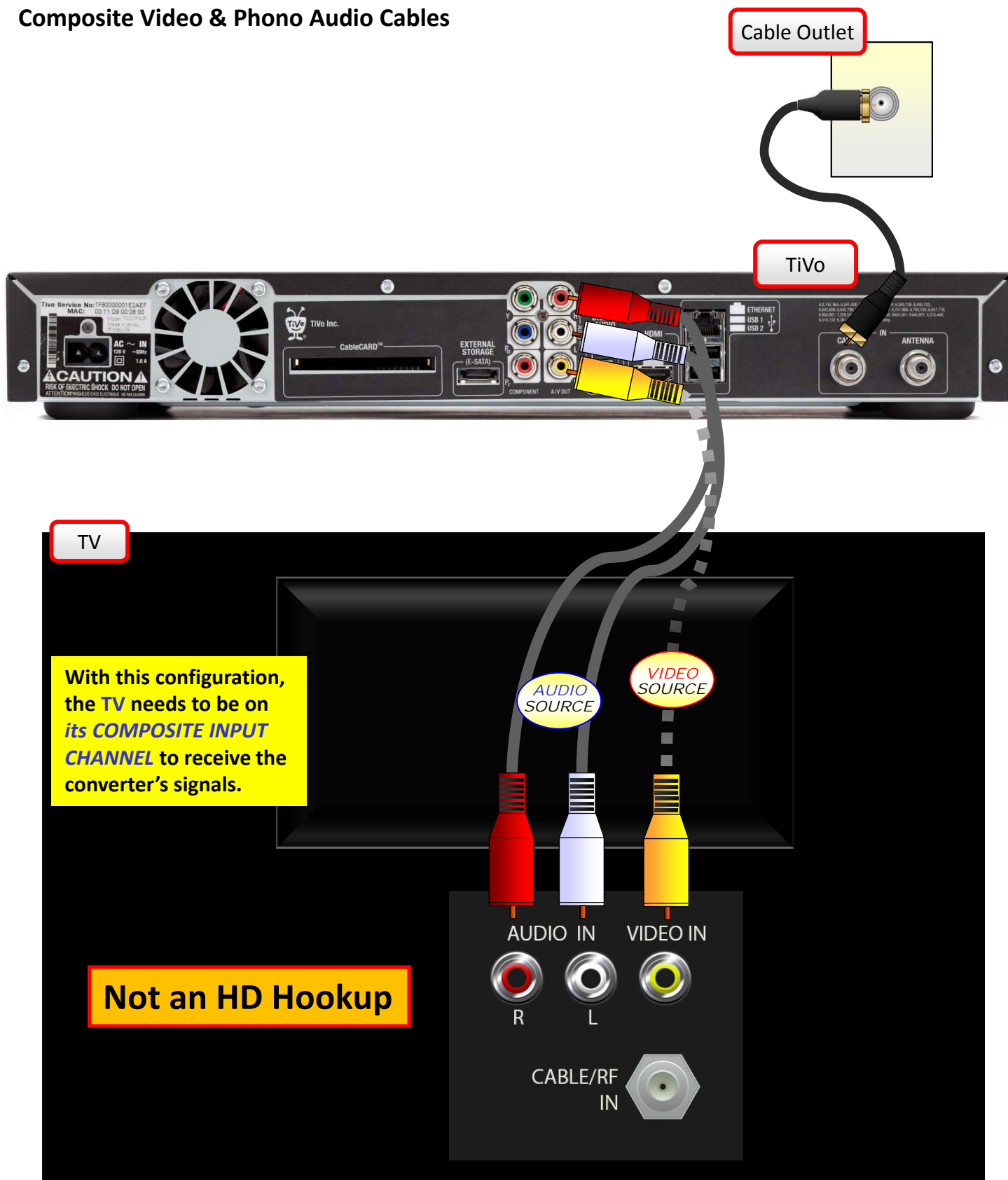
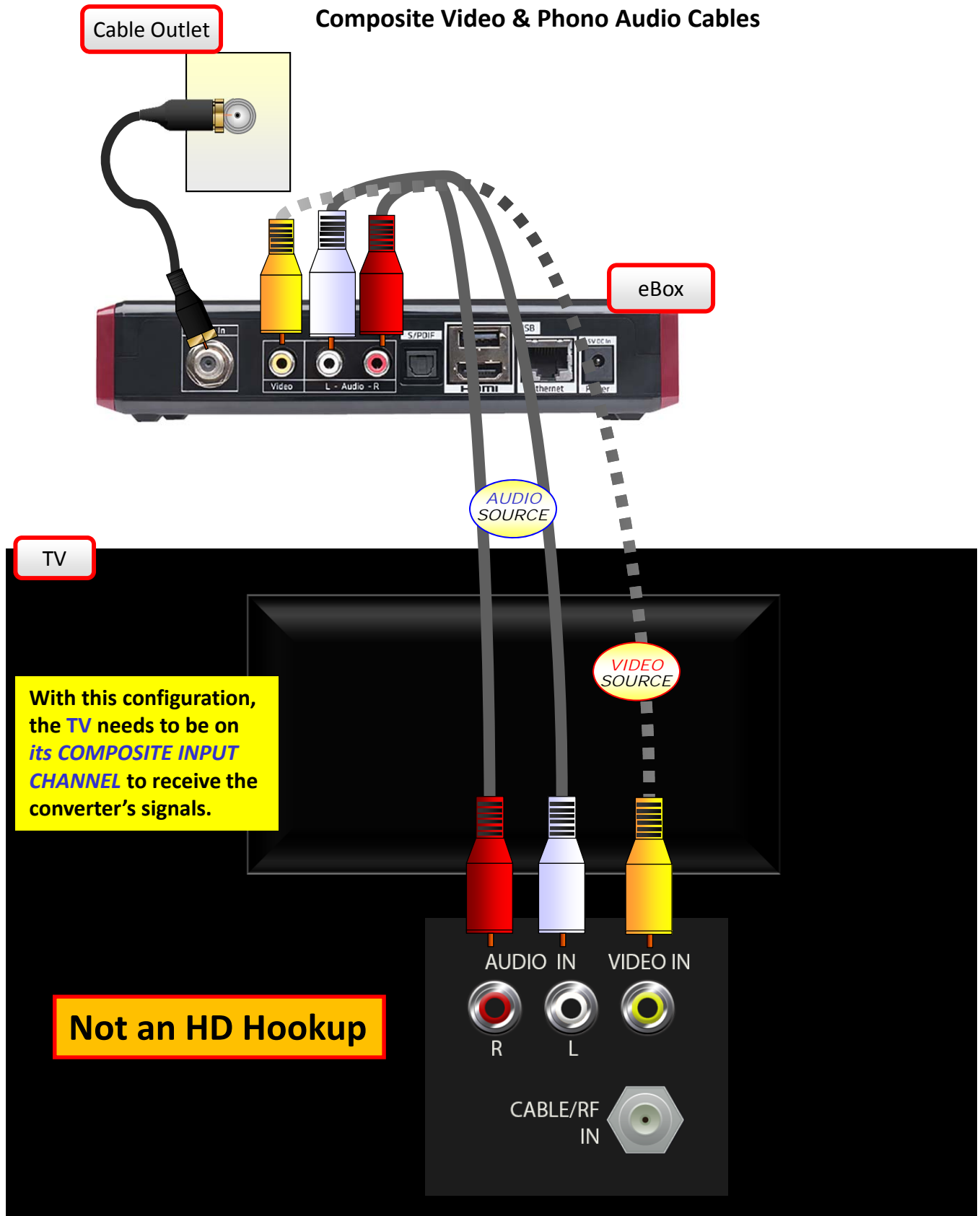


Outlet ► TiVo ► TV

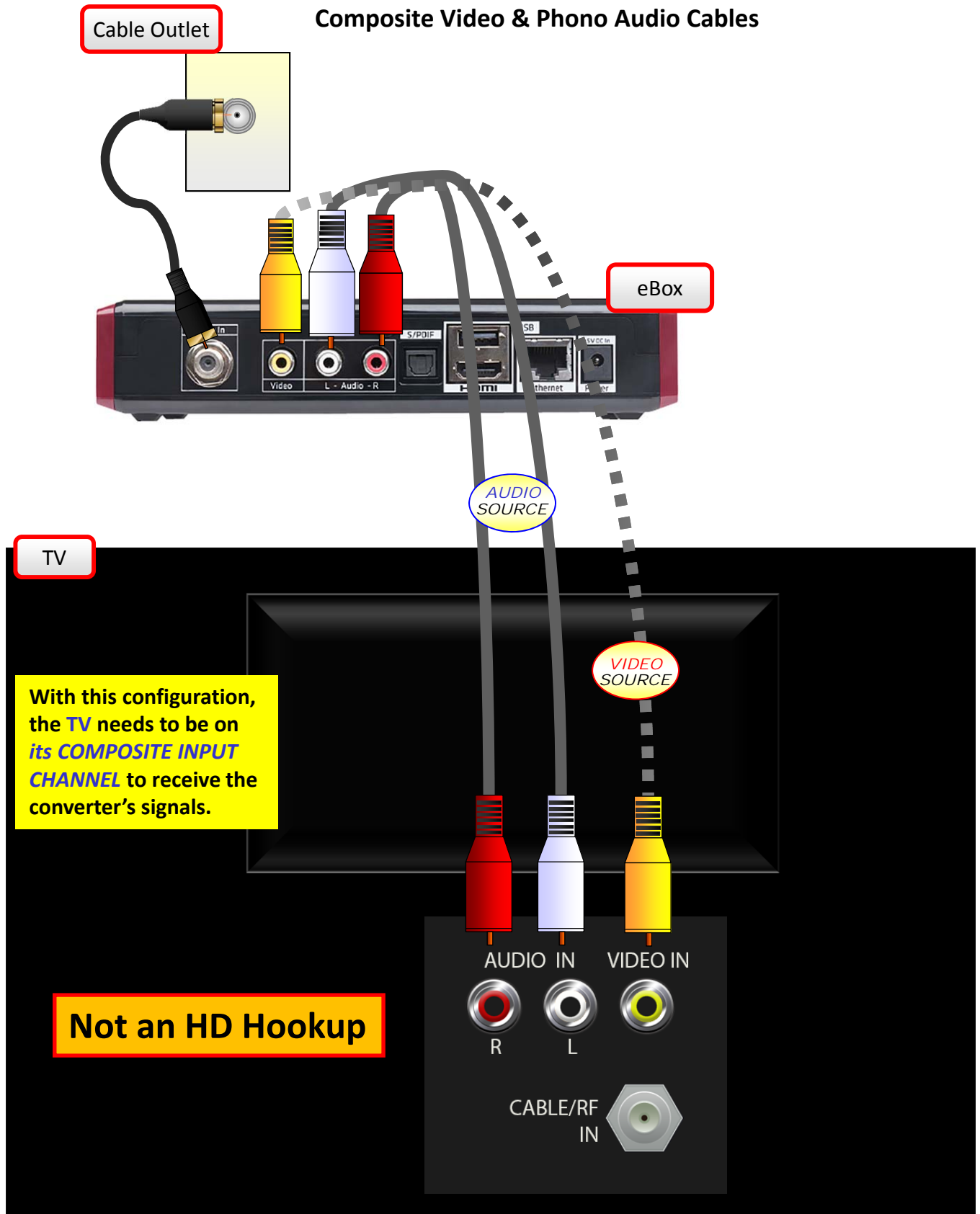
Composite Video & Phono Audio Cables



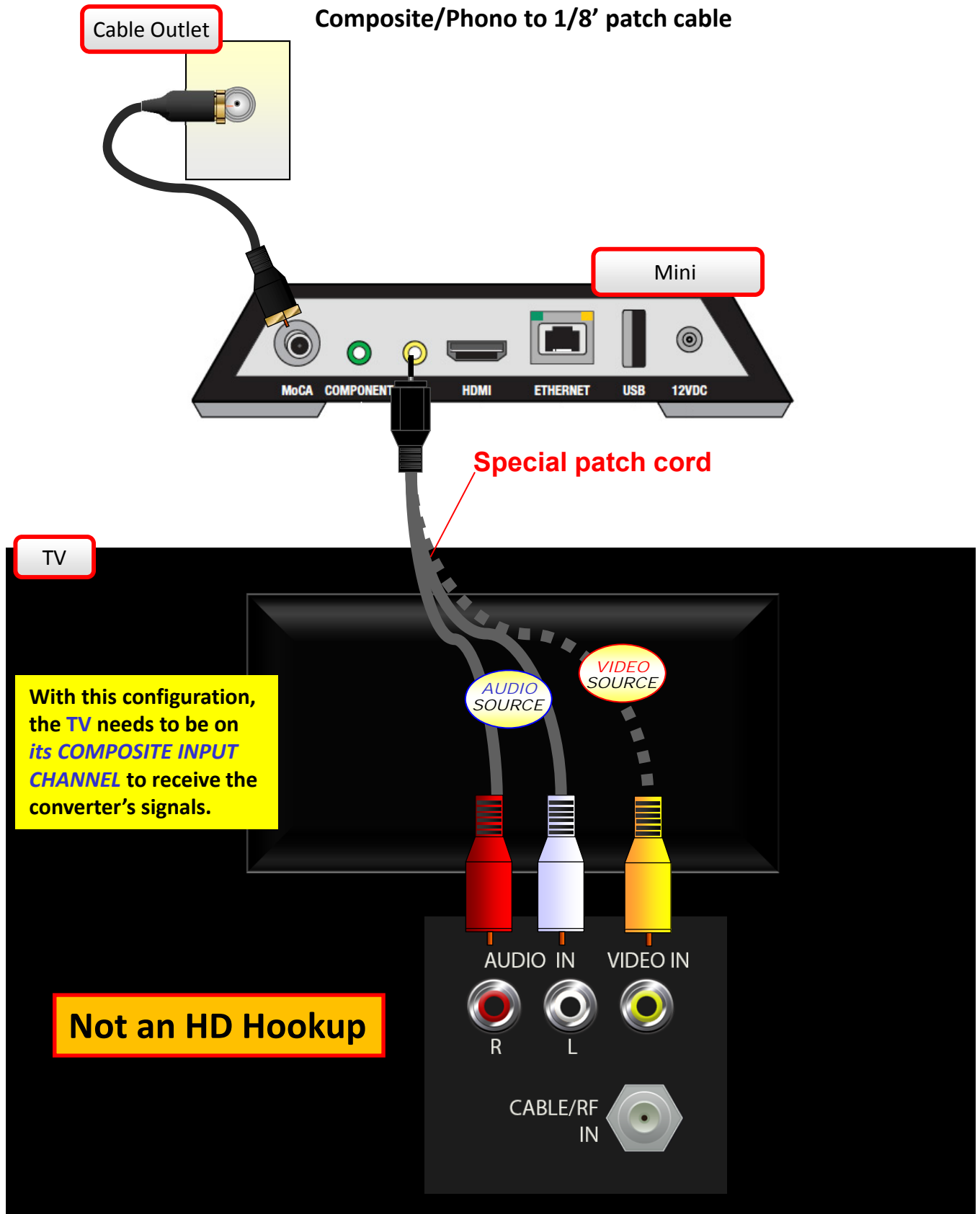
Outlet ► eBox ► TV



Outlet ► eBox ► TV



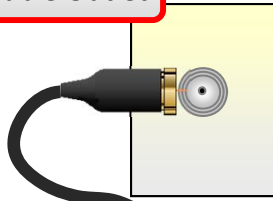
Outlet ▶ Mini ▶ TV



Outlet ► Mini ► TV

Composite/Phono to 1/8' patch cable

Cable Outlet



Mini (Mi3)



Special patch cord

TV

With this configuration, the TV needs to be on *its COMPOSITE INPUT CHANNEL* to receive the converter's signals.

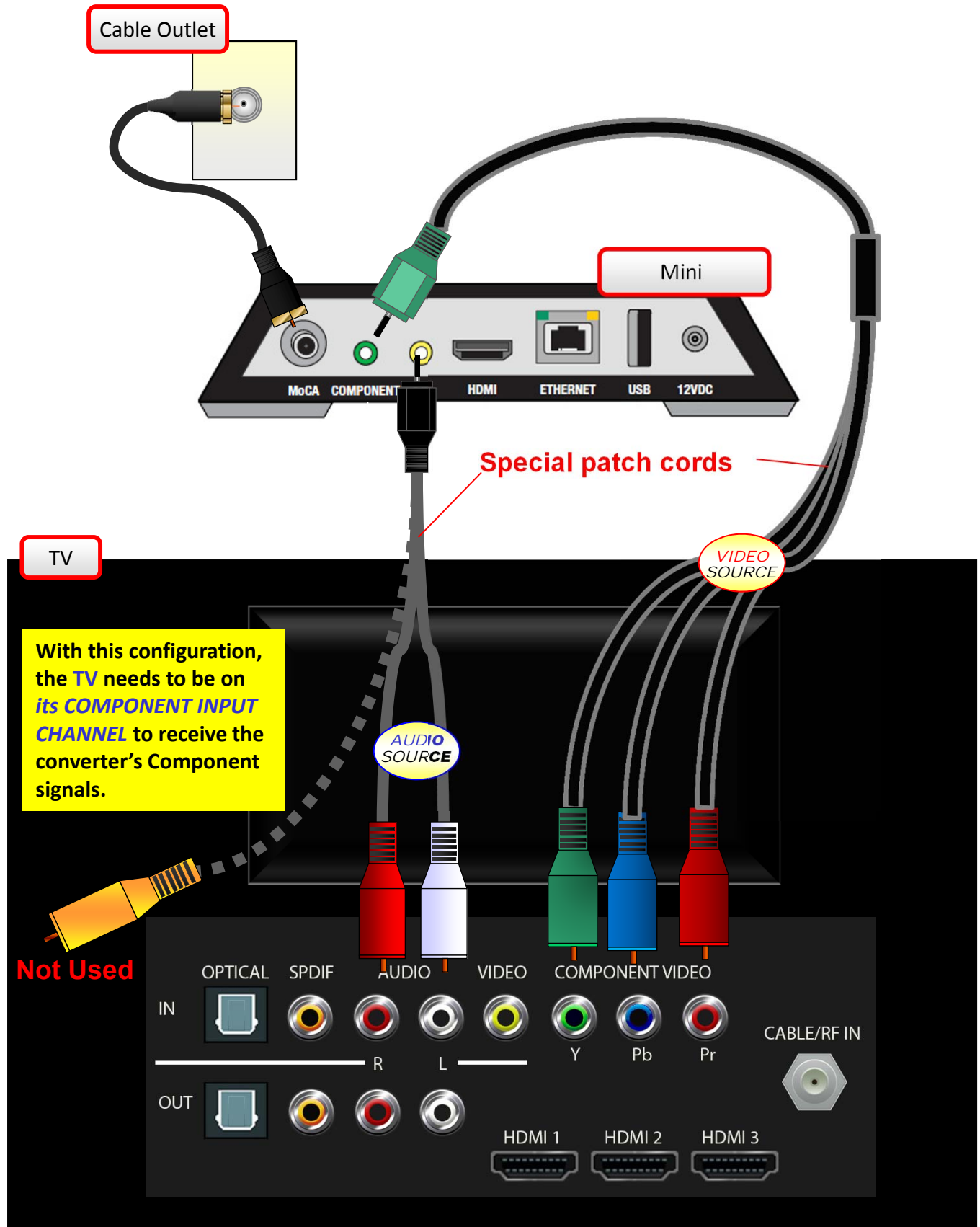
AUDIO SOURCE

VIDEO SOURCE

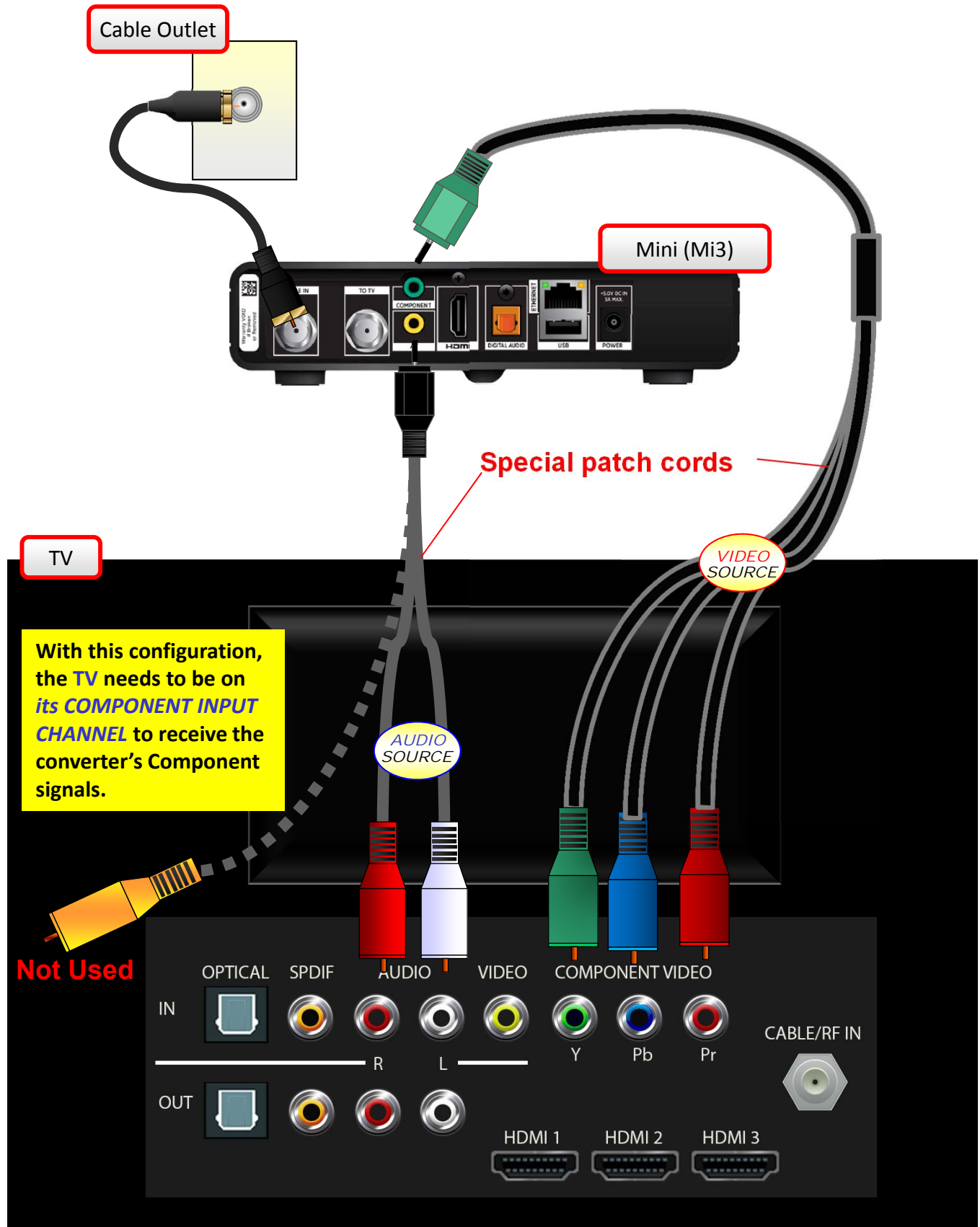


Not an HD Hookup

Outlet ► Mini ► HDTV



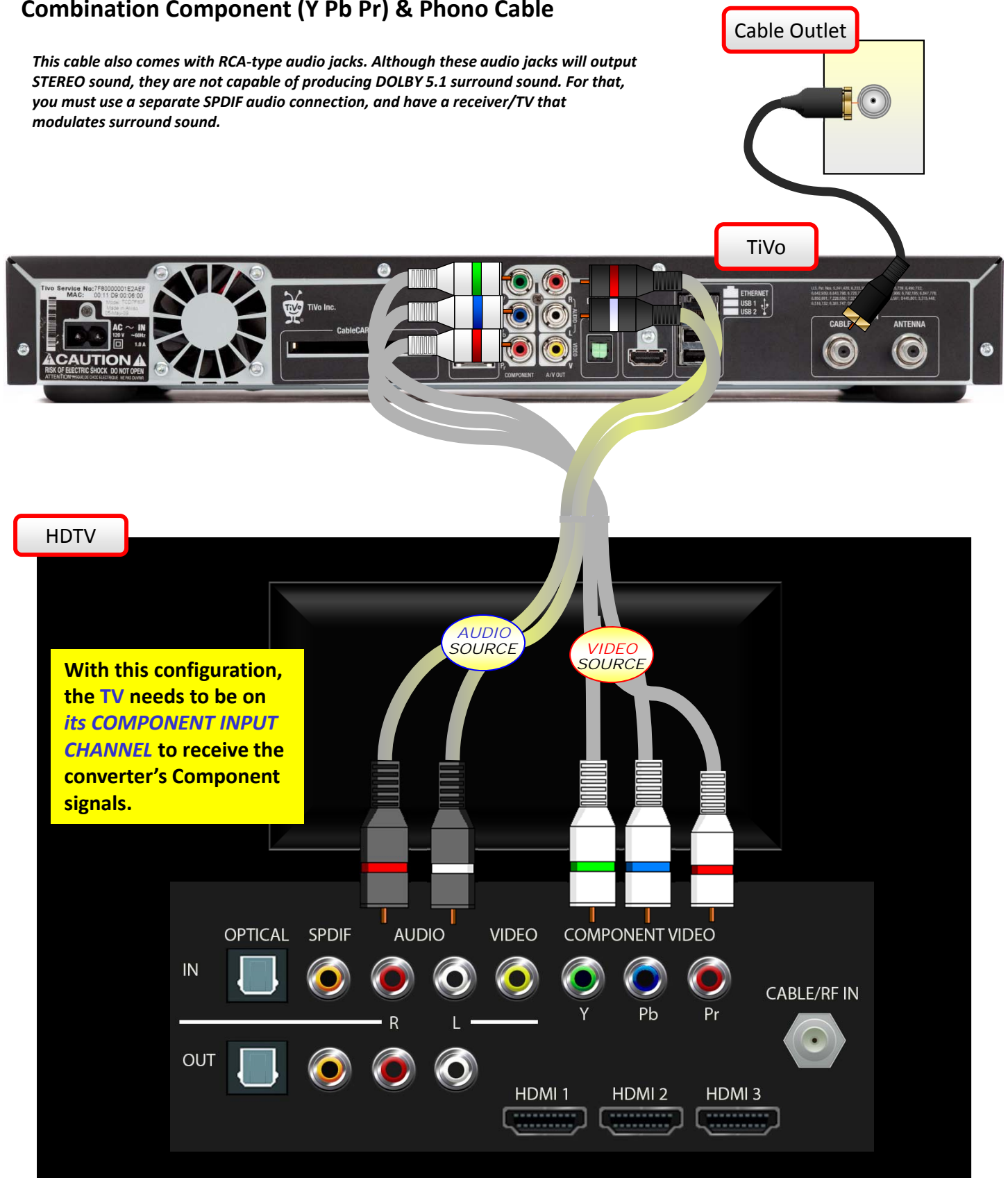
Outlet ► Mini ► HDTV



Outlet ► TiVo ► HDTV

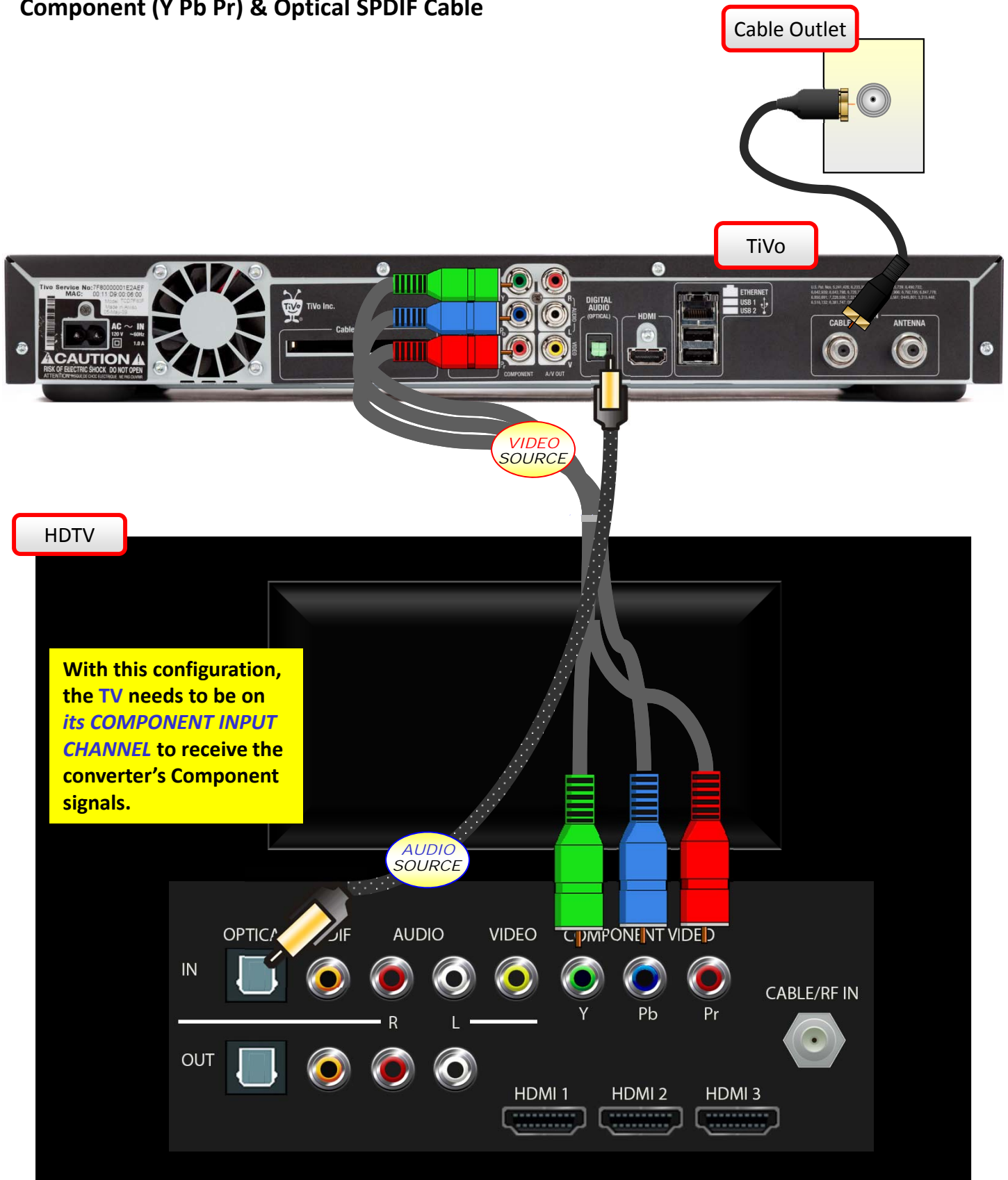
Combination Component (Y Pb Pr) & Phono Cable

This cable also comes with RCA-type audio jacks. Although these audio jacks will output STEREO sound, they are not capable of producing DOLBY 5.1 surround sound. For that, you must use a separate SPDIF audio connection, and have a receiver/TV that modulates surround sound.



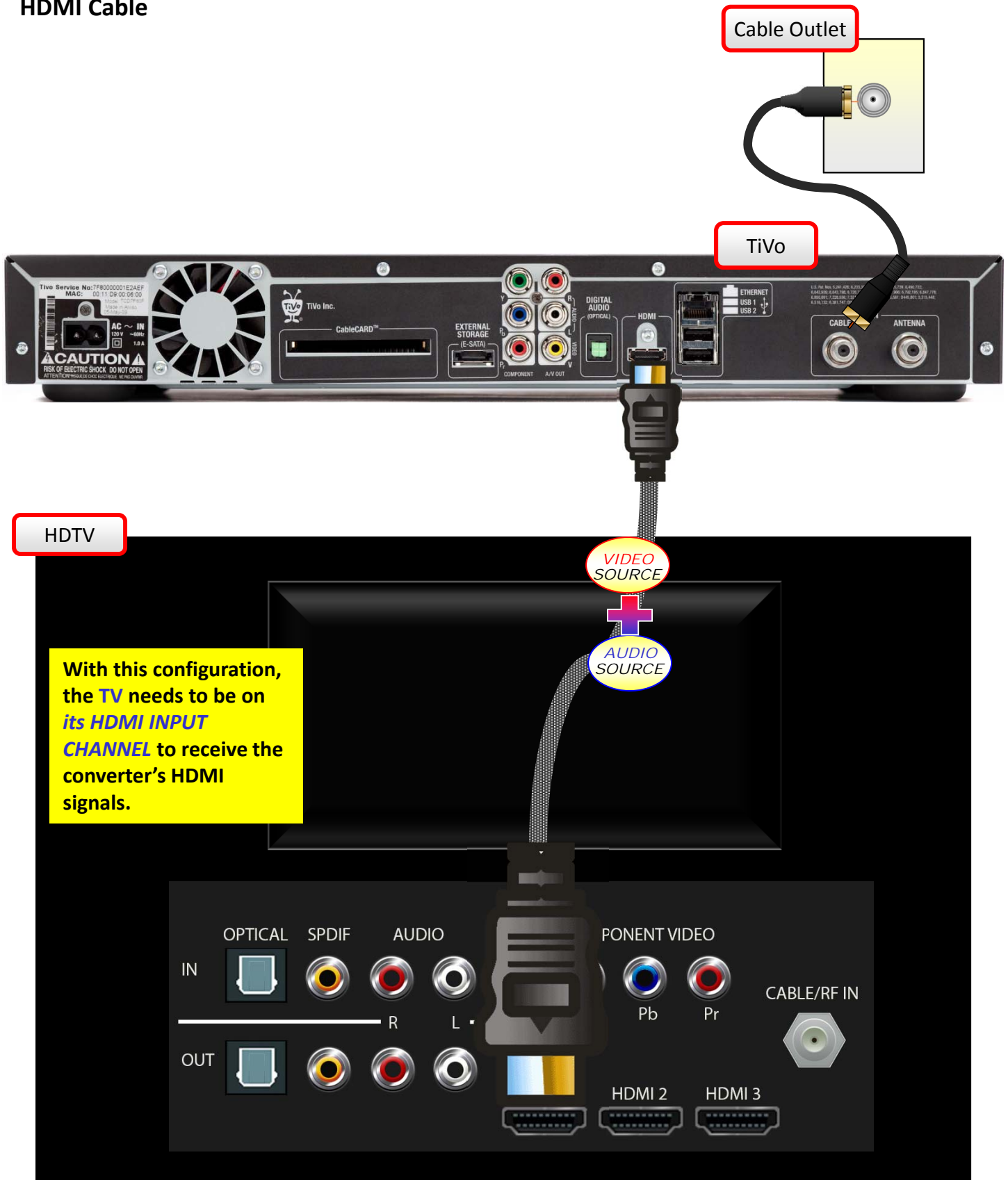
Outlet ► TiVo ► HDTV

Component (Y Pb Pr) & Optical SPDIF Cable



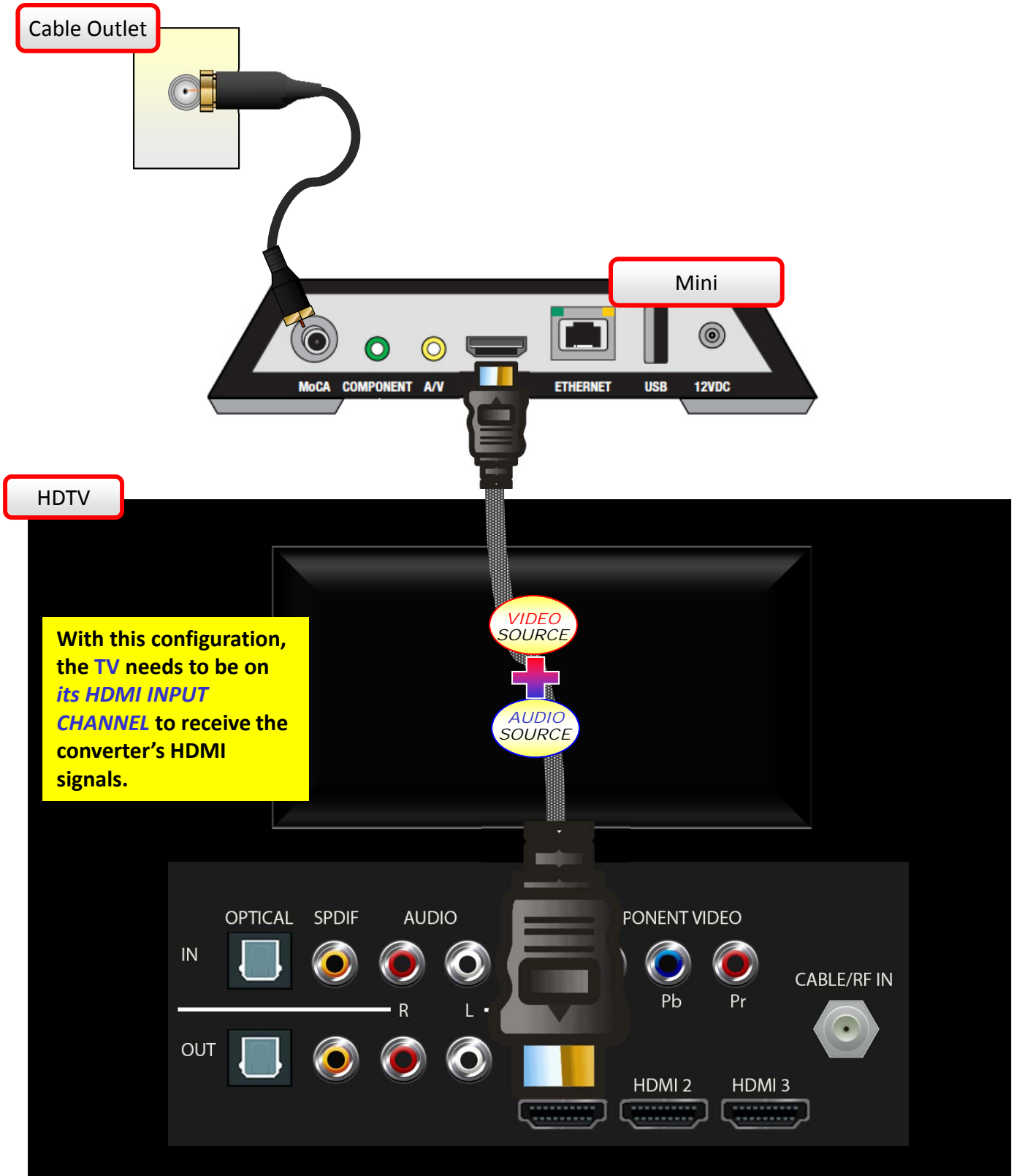
Outlet ► TiVo ► HDTV

HDMI Cable



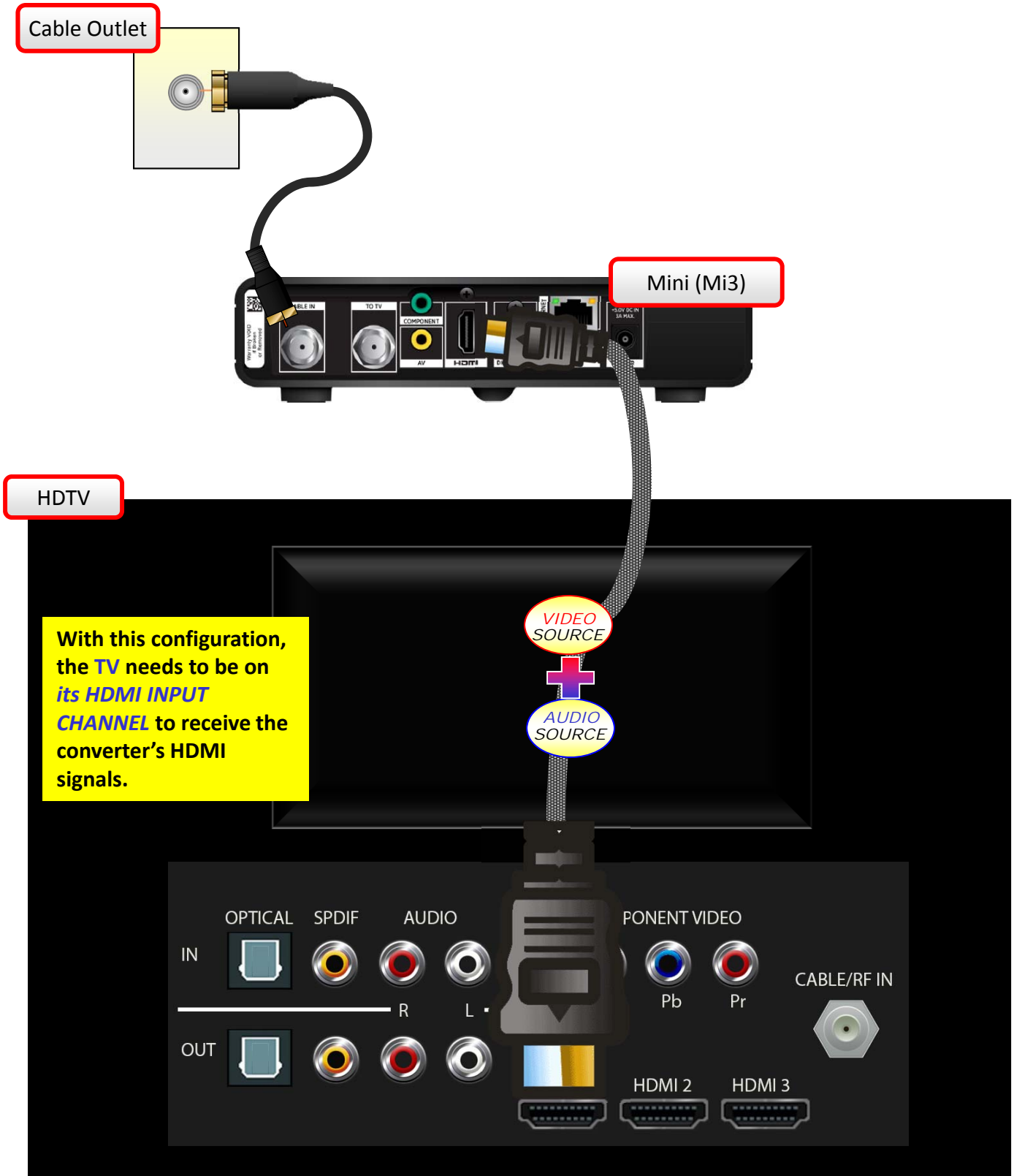
Outlet ► Mini ► HDTV

HDMI Cable



Outlet ► Mini ► HDTV

HDMI Cable



Outlet ► eBox ► HDTV

HDMI Cable



Cable Outlet

eBox

HDTV

With this configuration, the TV needs to be on its **HDMI INPUT CHANNEL** to receive the converter's HDMI signals.

VIDEO SOURCE

AUDIO SOURCE

IN OPTICAL SPDIF AUDIO PONENT VIDEO CABLE/RF IN
OUT OPTICAL SPDIF AUDIO R L HDMI 2 HDMI 3

Outlet ► 4K TiVo ► 4KTV

HDMI Cable



Outlet ► 4K TiVo Mini ► 4KTV

HDMI Cable

